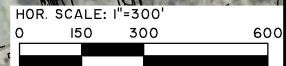
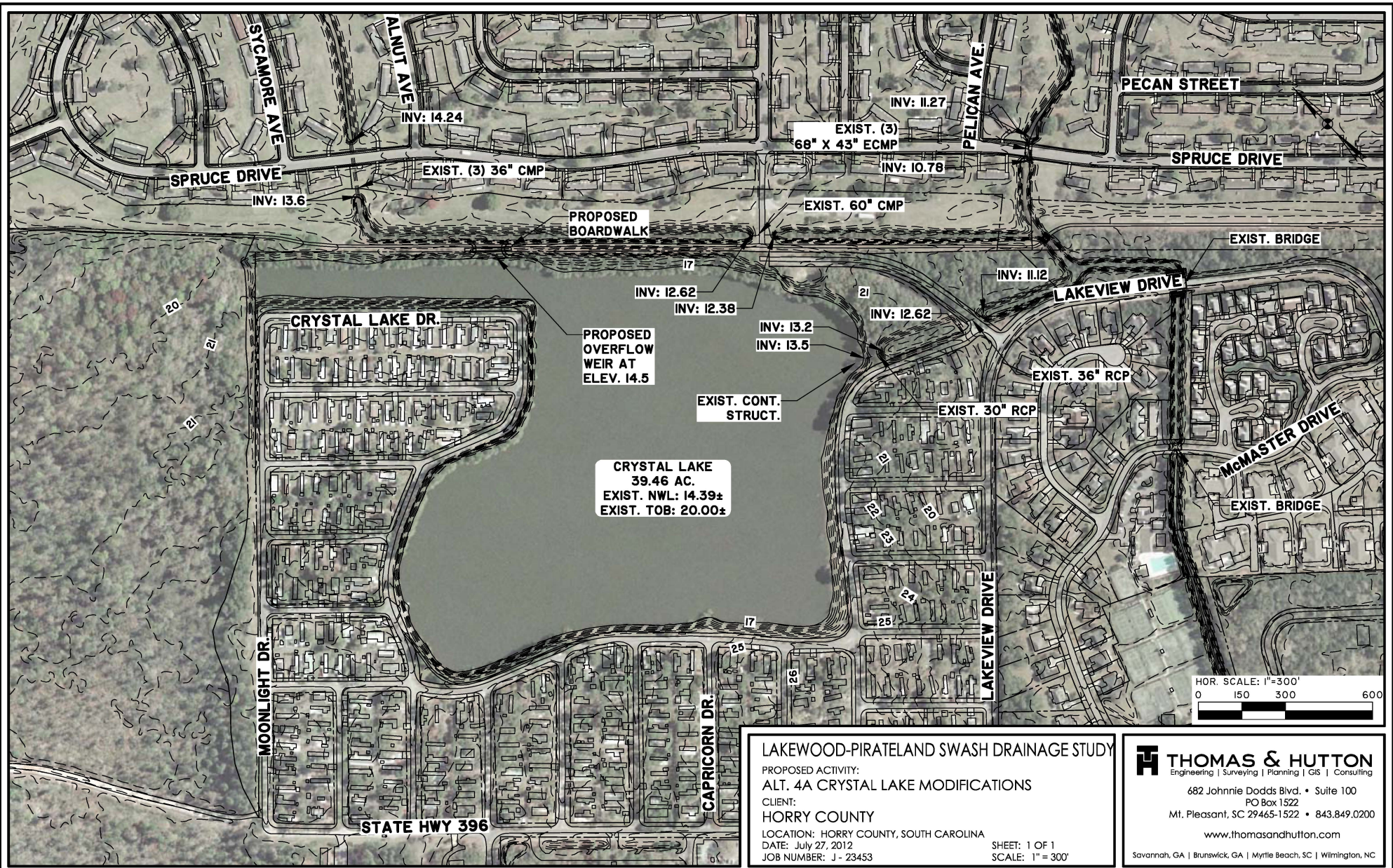


K:\23453\Drawing\Emilia\23453-117.dwg - Jul 17, 2012 - 6:36:16 AM

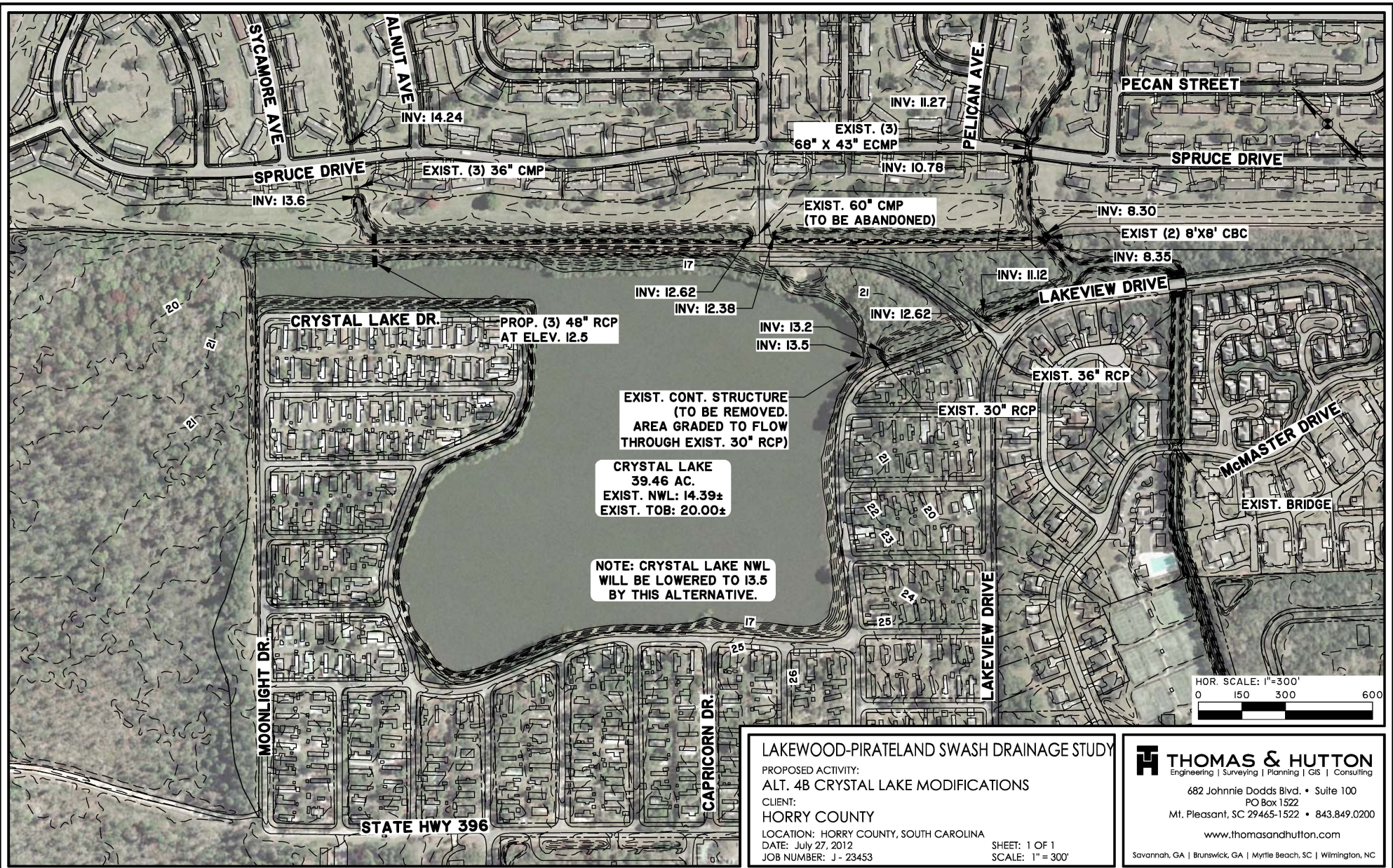


LAKWOOD-PIRATELAND SWASH DRAINAGE STUDY
 PROPOSED ACTIVITY:
 ALT. 4A CRYSTAL LAKE MODIFICATIONS
 CLIENT:
 Horry County
 LOCATION: Horry County, South Carolina
 DATE: July 27, 2012
 JOB NUMBER: J - 23453

SHEET: 1 OF 1
 SCALE: 1" = 300'

THOMAS & HUTTON
 Engineering | Surveying | Planning | GIS | Consulting
 682 Johnnie Dodds Blvd. • Suite 100
 PO Box 1522
 Mt. Pleasant, SC 29465-1522 • 843.849.0200
 www.thomasandhutton.com
 Savannah, GA | Brunswick, GA | Myrtle Beach, SC | Wilmington, NC

N. 234653.dwg - 29-48-INT.dwg - Jul 24, 2012 - 4:26:20 PM



EXIST. CONT. STRUCTURE (TO BE REMOVED. AREA GRADED TO FLOW THROUGH EXIST. 30" RCP)

CRYSTAL LAKE
39.46 AC.
EXIST. NWL: 14.39±
EXIST. TOB: 20.00±

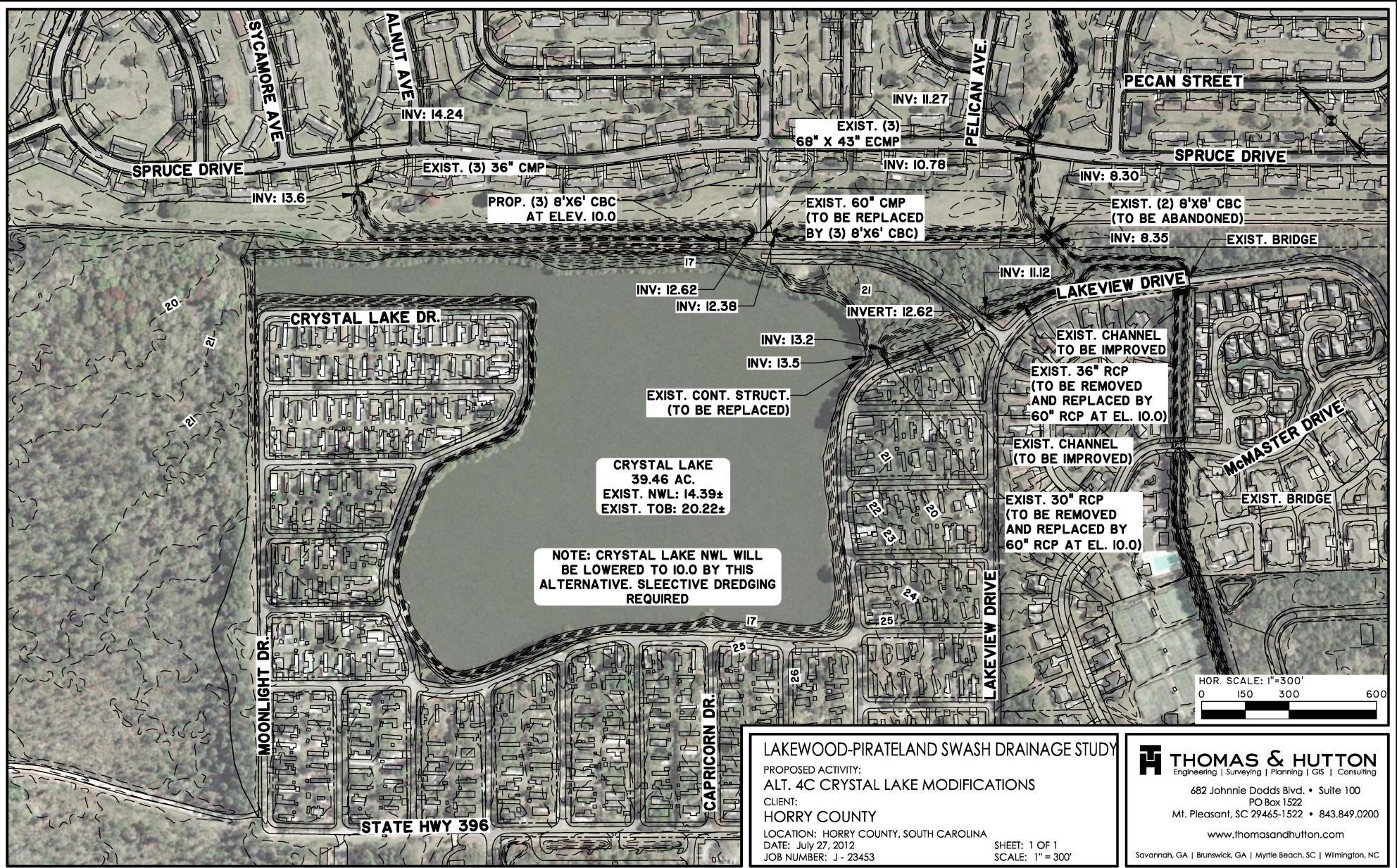
NOTE: CRYSTAL LAKE NWL WILL BE LOWERED TO 13.5 BY THIS ALTERNATIVE.

LAKWOOD-PIRATELAND SWASH DRAINAGE STUDY
 PROPOSED ACTIVITY:
ALT. 4B CRYSTAL LAKE MODIFICATIONS
 CLIENT:
HORRY COUNTY
 LOCATION: HORRY COUNTY, SOUTH CAROLINA
 DATE: July 27, 2012
 JOB NUMBER: J - 23453

SHEET: 1 OF 1
SCALE: 1" = 300'

THOMAS & HUTTON
 Engineering | Surveying | Planning | GIS | Consulting
 682 Johnnie Dodds Blvd. • Suite 100
 PO Box 1522
 Mt. Pleasant, SC 29465-1522 • 843.849.0200
 www.thomasandhutton.com
 Savannah, GA | Brunswick, GA | Myrtle Beach, SC | Wilmington, NC

N:\234653\Drawings\Crhhb\234653.dwg - Jul 24, 2012 - 4:43:20 PM



LAKWOOD-PIRATELAND SWASH DRAINAGE STUDY
 PROPOSED ACTIVITY:
 ALT. 4C CRYSTAL LAKE MODIFICATIONS
 CLIENT:
 Horry County
 LOCATION: Horry County, South Carolina
 DATE: July 27, 2012
 JOB NUMBER: J - 234653

SHEET: 1 OF 1
 SCALE: 1" = 300'

THOMAS & HUTTON
 Engineering | Surveying | Planning | GIS | Consulting
 682 Johnnie Dodds Blvd. • Suite 100
 PO Box 1522
 Mt. Pleasant, SC 29465-1522 • 843.849.0200
 www.thomasandhutton.com
 Savannah, GA | Brunswick, GA | Myrtle Beach, SC | Wilmington, NC