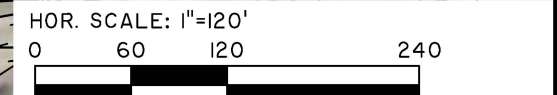
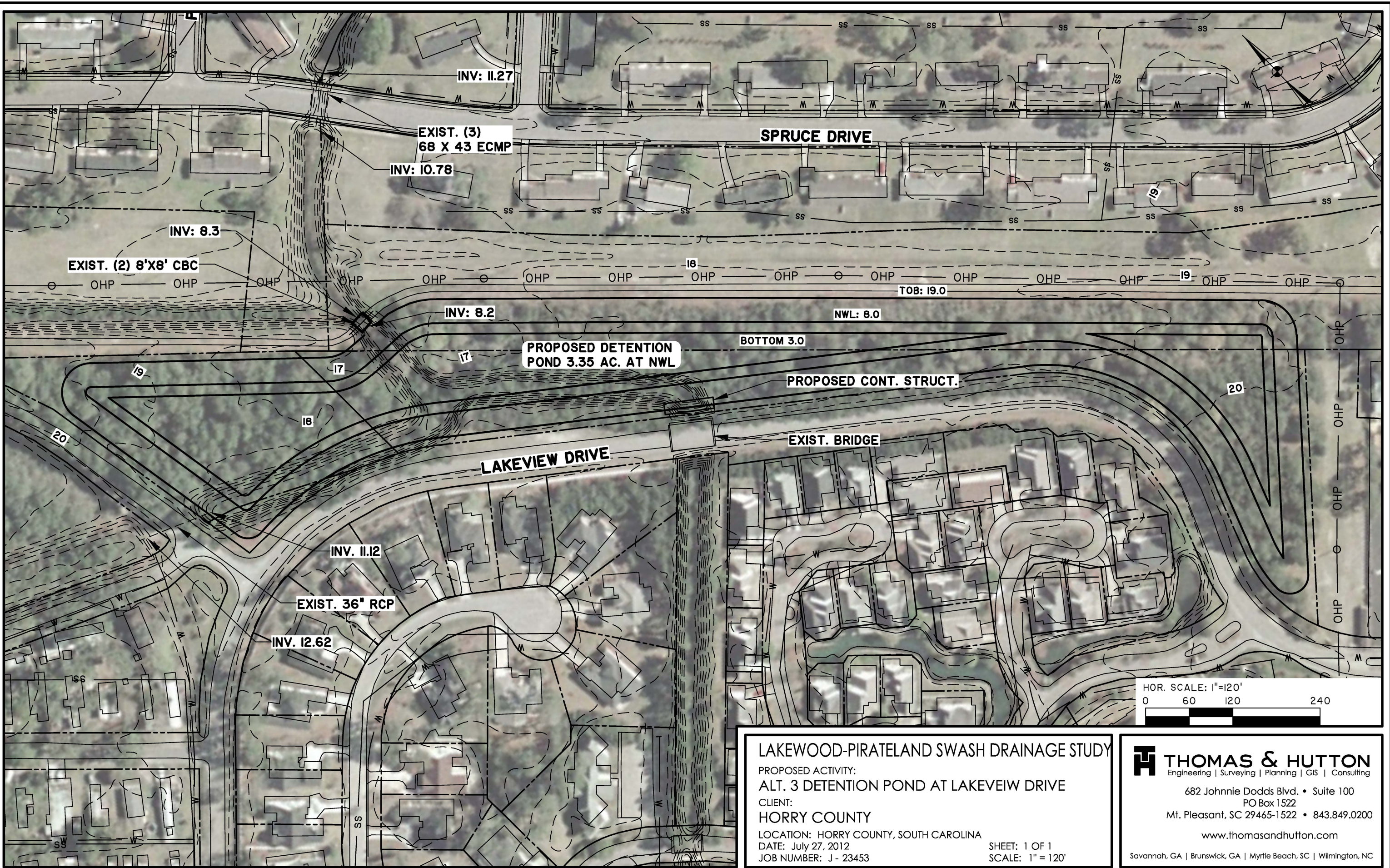


N:\23453\Drawings\Exhibit\23453-1\17.dwg - Jul 30, 2012 - 3:44:40 PM



LAKWOOD-PIRATELAND SWASH DRAINAGE STUDY
 PROPOSED ACTIVITY:
ALT. 3 DETENTION POND AT LAKEVEIW DRIVE
 CLIENT:
HORRY COUNTY
 LOCATION: HORRY COUNTY, SOUTH CAROLINA
 DATE: July 27, 2012
 JOB NUMBER: J - 23453

SHEET: 1 OF 1
 SCALE: 1" = 120'

THOMAS & HUTTON
 Engineering | Surveying | Planning | GIS | Consulting
 682 Johnnie Dodds Blvd. • Suite 100
 PO Box 1522
 Mt. Pleasant, SC 29465-1522 • 843.849.0200
 www.thomasandhutton.com
 Savannah, GA | Brunswick, GA | Myrtle Beach, SC | Wilmington, NC