

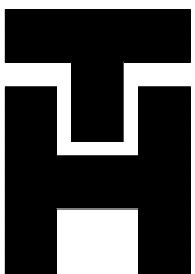
**DRAINAGE STUDY**  
**PHASE 2 – ALTERNATIVE IMPROVEMENTS**

FOR:  
**LAKEWOOD – PIRATELAND SWASH**  
HORRY COUNTY, SC

**FIGURES**

**SEPTEMBER 18, 2012**

**J-23453.404**



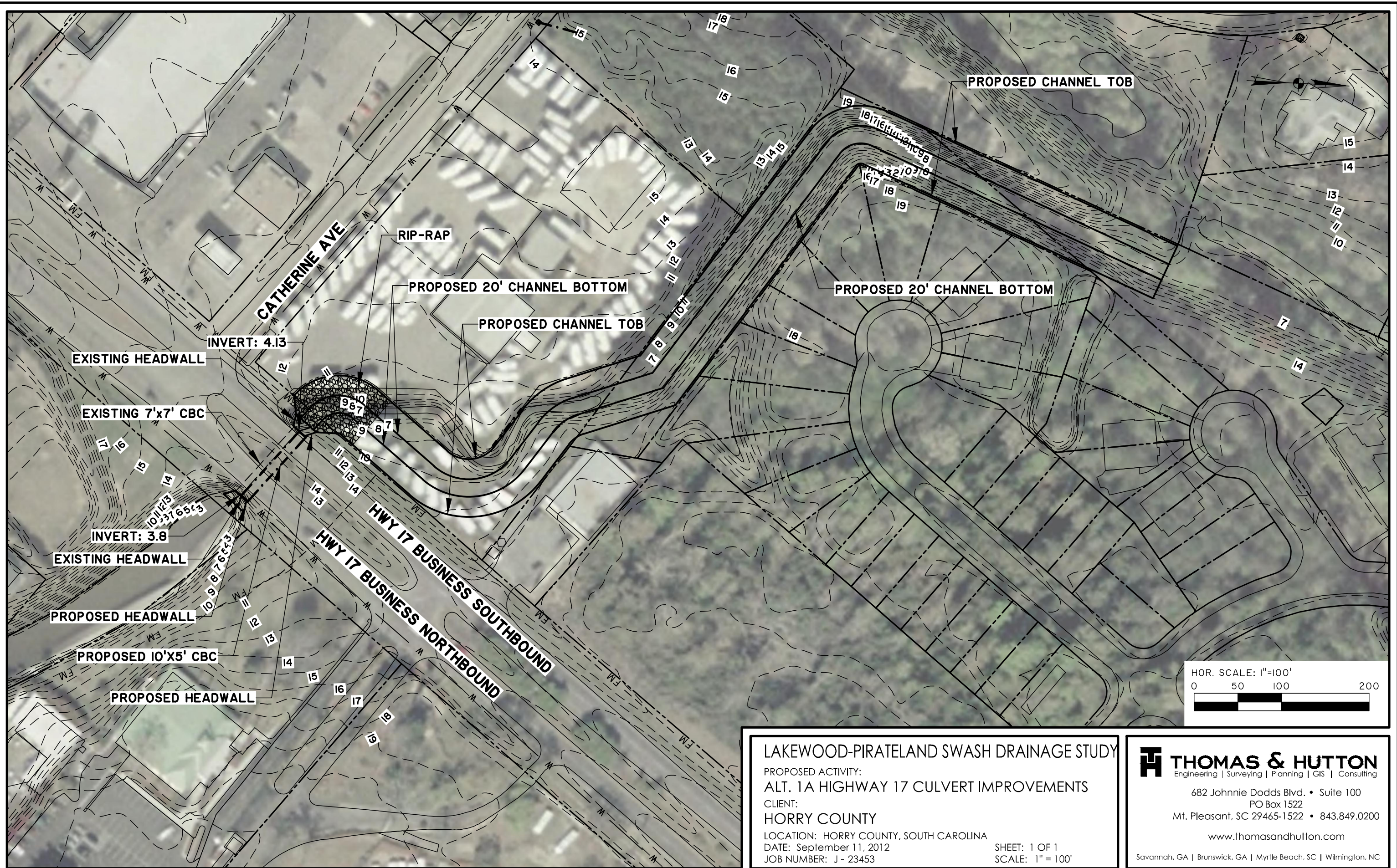
Prepared by:

**THOMAS & HUTTON**

Savannah, GA | Charleston, SC | Myrtle Beach, SC | Brunswick, GA | Wilmington, NC



N:\23453\Drawings\Exhibits\23453-Alt1A-rpk.dwg - Sep 12, 2012 - 9:15:40 AM



## LAKEWOOD-PIRATELAND SWASH DRAINAGE STUDY

PROPOSED ACTIVITY:

ALT. 1A HIGHWAY 17 CULVERT IMPROVEMENTS

CLIENT:

HORRY COUNTY

LOCATION: HORRY COUNTY, SOUTH CAROLINA

DATE: September 11, 2012

JOB NUMBER: J - 23453

SHEET: 1 OF 1

SCALE: 1" = 100'

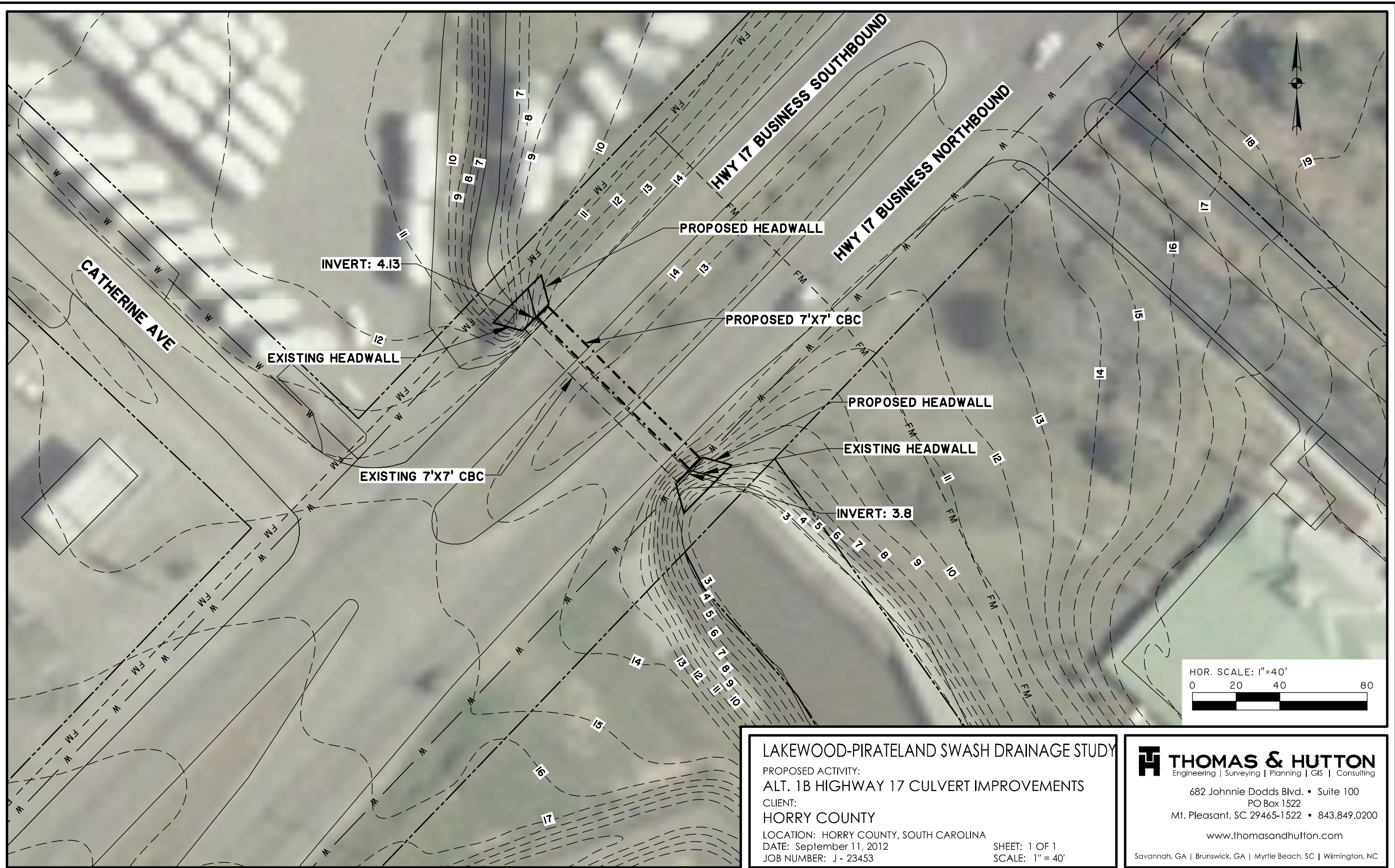
**THOMAS & HUTTON**  
Engineering | Surveying | Planning | GIS | Consulting

682 Johnnie Dodds Blvd. • Suite 100  
PO Box 1522  
Mt. Pleasant, SC 29465-1522 • 843.849.0200

[www.thomasandhutton.com](http://www.thomasandhutton.com)

Savannah, GA | Brunswick, GA | Myrtle Beach, SC | Wilmington, NC





## LAKEWOOD-PIRATELAND SWASH DRAINAGE STUDY

PROPOSED ACTIVITY:

ALT. 1B HIGHWAY 17 CULVERT IMPROVEMENTS

CLIENT:

HORRY COUNTY

LOCATION: HORRY COUNTY, SOUTH CAROLINA

DATE: September 11, 2012

JOB NUMBER: J - 23453

SHEET: 1 OF 1

SCALE: 1" = 40'

**THOMAS & HUTTON**  
Engineering | Surveying | Planning | GIS | Consulting

682 Johnnie Dodds Blvd. • Suite 100

PO Box 1522

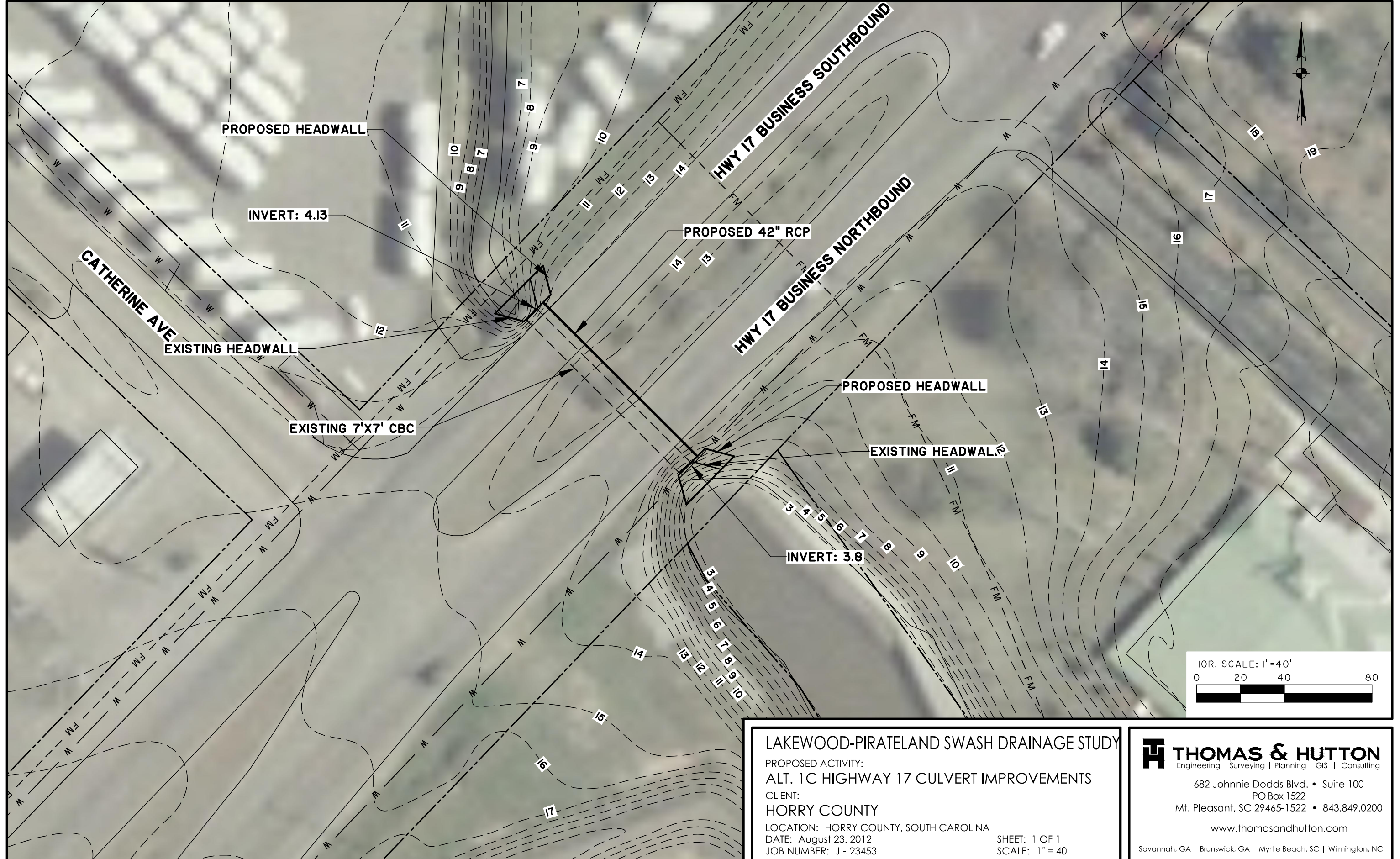
Mt. Pleasant, SC 29465-1522 • 843.849.0200

[www.thomasandhutton.com](http://www.thomasandhutton.com)

Savannah, GA | Brunswick, GA | Myrtle Beach, SC | Wilmington, NC



N:\23453\drawings\Exhibits\23453-hw17-1c.dwg - Aug 23, 2012 - 12:45:40 PM



## LAKEWOOD-PIRATELAND SWASH DRAINAGE STUDY

PROPOSED ACTIVITY:

ALT. 1C HIGHWAY 17 CULVERT IMPROVEMENTS

CLIENT:

HORRY COUNTY

LOCATION: HORRY COUNTY, SOUTH CAROLINA

DATE: August 23, 2012

JOB NUMBER: J - 23453

SHEET: 1 OF 1

SCALE: 1" = 40'

**THOMAS & HUTTON**  
Engineering | Surveying | Planning | GIS | Consulting

682 Johnnie Dodds Blvd. • Suite 100

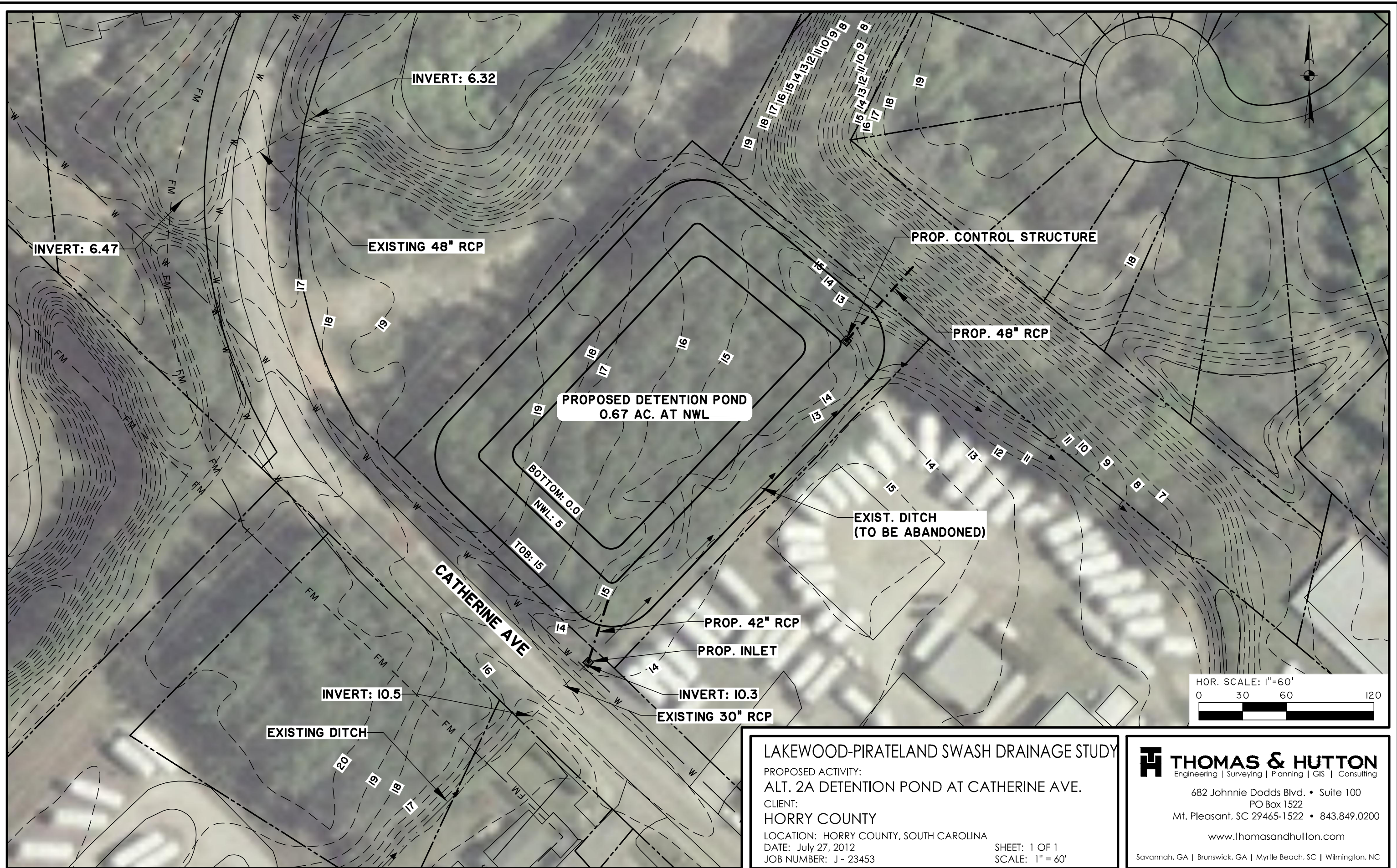
PO Box 1522

Mt. Pleasant, SC 29465-1522 • 843.849.0200

[www.thomasandhutton.com](http://www.thomasandhutton.com)

Savannah, GA | Brunswick, GA | Myrtle Beach, SC | Wilmington, NC





### LAKEWOOD-PIRATELAND SWASH DRAINAGE STUDY

PROPOSED ACTIVITY:  
ALT. 2A DETENTION POND AT CATHERINE AVE.  
CLIENT:  
HORRY COUNTY  
LOCATION: HORRY COUNTY, SOUTH CAROLINA  
DATE: July 27, 2012  
JOB NUMBER: J - 23453

SHEET: 1 OF 1  
SCALE: 1" = 60'

**THOMAS & HUTTON**  
Engineering | Surveying | Planning | GIS | Consulting

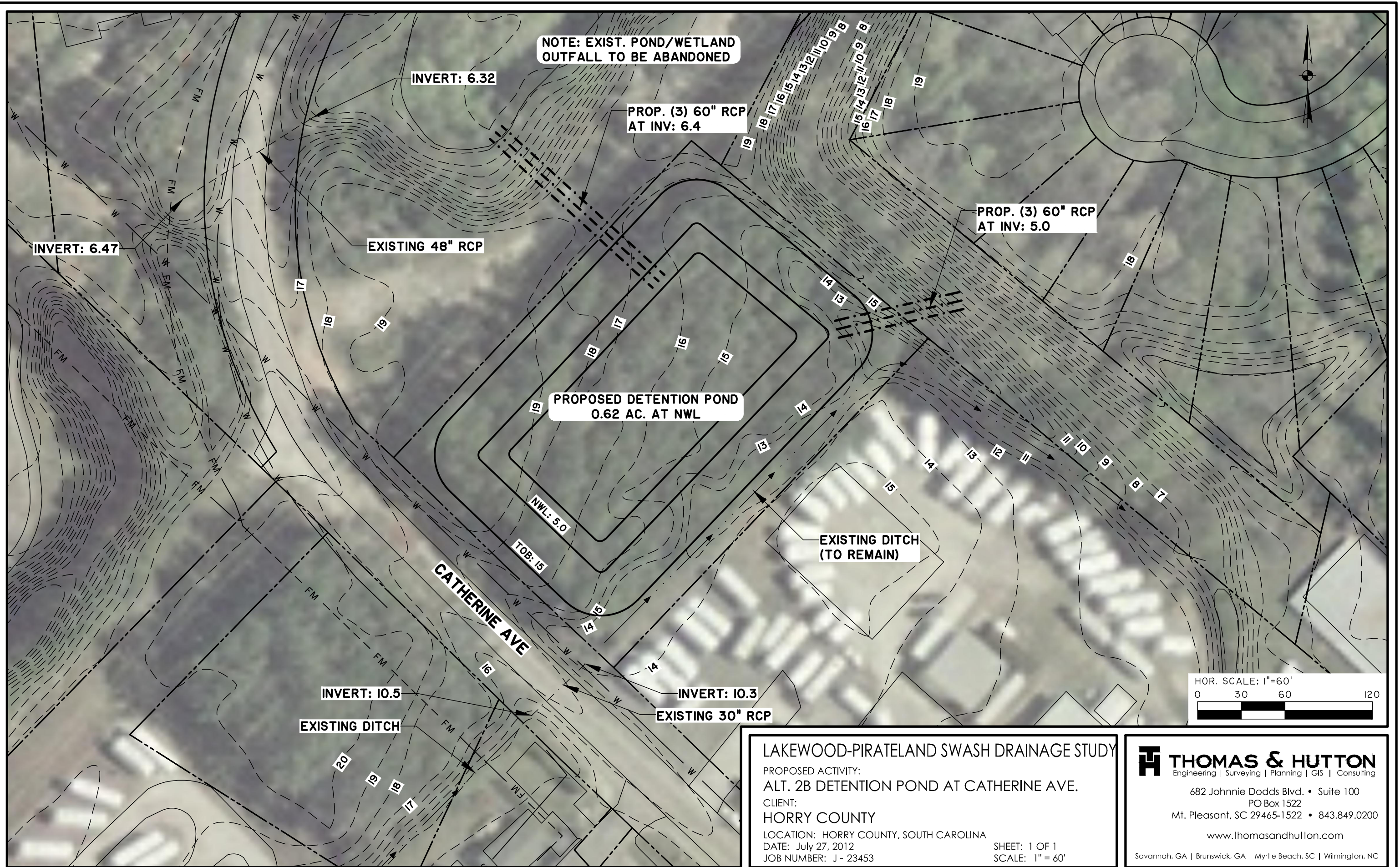
682 Johnnie Dodds Blvd. • Suite 100  
PO Box 1522  
Mt. Pleasant, SC 29465-1522 • 843.849.0200

[www.thomasandhutton.com](http://www.thomasandhutton.com)

Savannah, GA | Brunswick, GA | Myrtle Beach, SC | Wilmington, NC



N:\23453\Drawings\Exhibits\23453Alt 2B-4B-1117.dwg - Jul 24, 2012 - 4:26:28 PM



## LAKEWOOD-PIRATELAND SWASH DRAINAGE STUDY

PROPOSED ACTIVITY:

ALT. 2B DETENTION POND AT CATHERINE AVE.

CLIENT:

HORRY COUNTY

LOCATION: HORRY COUNTY, SOUTH CAROLINA

DATE: July 27, 2012

JOB NUMBER: J - 23453

SHEET: 1 OF 1

SCALE: 1" = 60'

**THOMAS & HUTTON**  
Engineering | Surveying | Planning | GIS | Consulting

682 Johnnie Dodds Blvd. • Suite 100

PO Box 1522

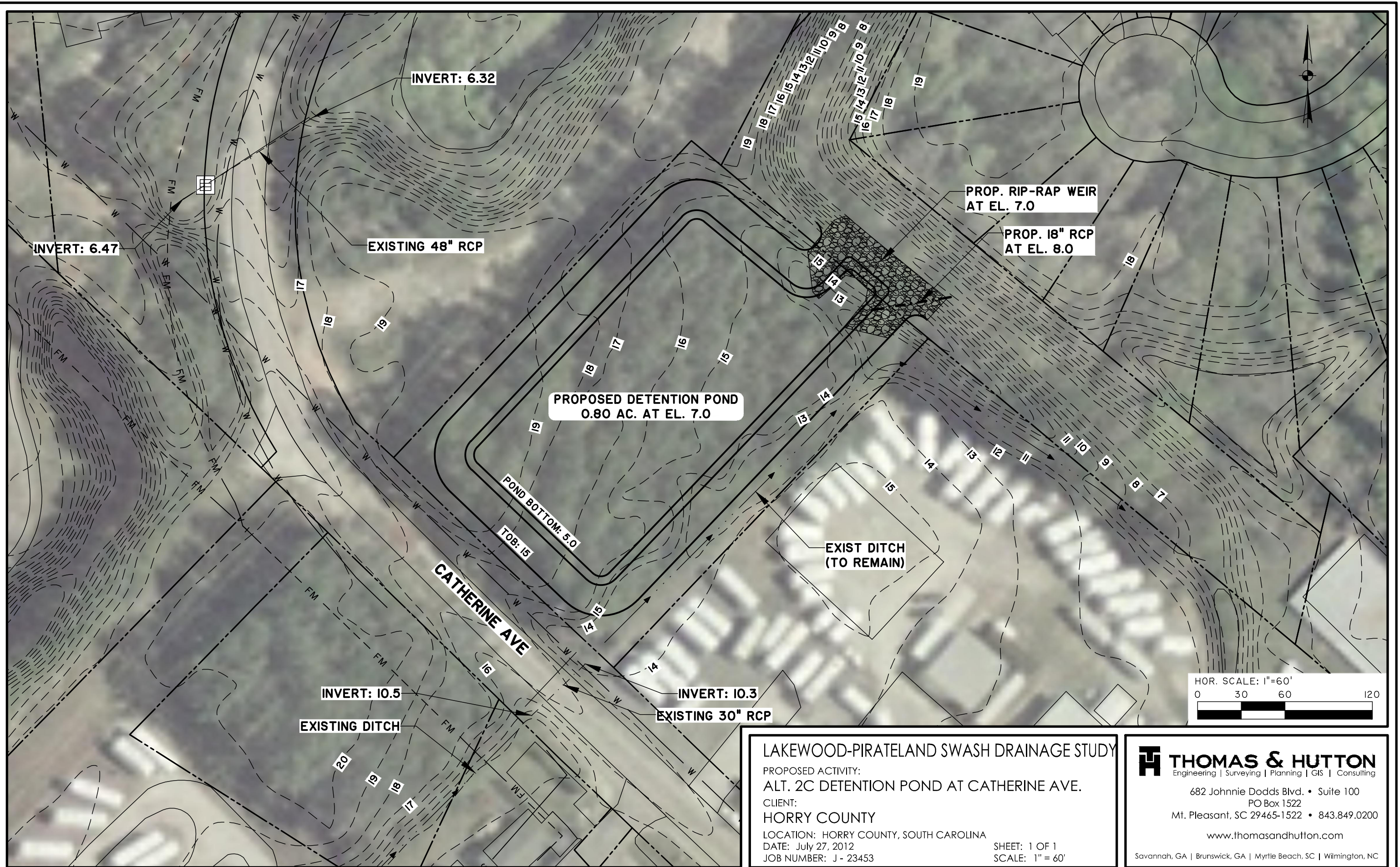
Mt. Pleasant, SC 29465-1522 • 843.849.0200

[www.thomasandhutton.com](http://www.thomasandhutton.com)

Savannah, GA | Brunswick, GA | Myrtle Beach, SC | Wilmington, NC



N:\23453\drawings\Exhibits\23453Alt 2C-4C-1\17.dwg - Jul 24, 2012 - 4:53:20 PM



## LAKWOOD-PIRATELAND SWASH DRAINAGE STUDY

PROPOSED ACTIVITY:

ALT. 2C DETENTION POND AT CATHERINE AVE.

CLIENT:

HORRY COUNTY

LOCATION: HORRY COUNTY, SOUTH CAROLINA

DATE: July 27, 2012

JOB NUMBER: J - 23453

SHEET: 1 OF 1

SCALE: 1" = 60'

**THOMAS & HUTTON**  
Engineering | Surveying | Planning | GIS | Consulting

682 Johnnie Dodds Blvd. • Suite 100

PO Box 1522

Mt. Pleasant, SC 29465-1522 • 843.849.0200

[www.thomasandhutton.com](http://www.thomasandhutton.com)

Savannah, GA | Brunswick, GA | Myrtle Beach, SC | Wilmington, NC